

VECTOR FOG

USER MANUAL
ULV FOGGER
C20, C100 Plus, C150 Plus

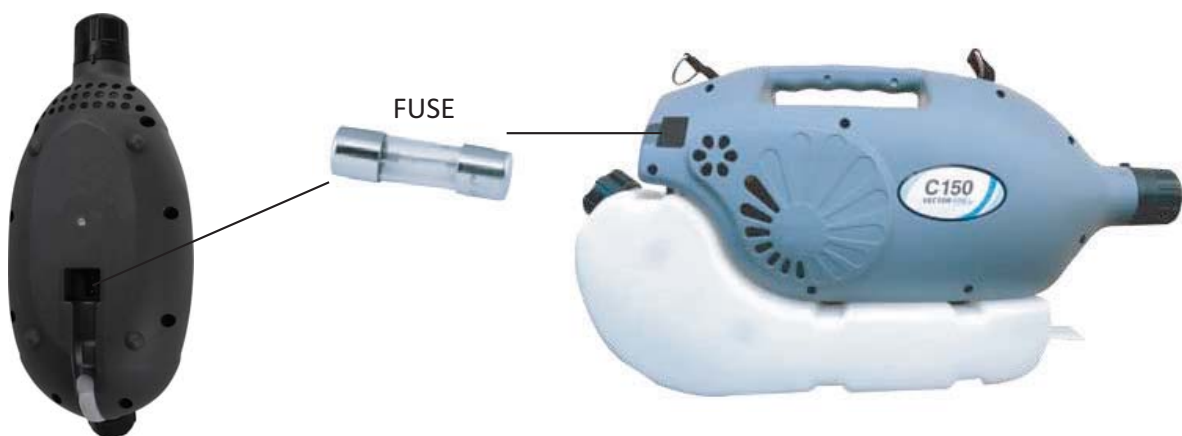


01. SAFETY PRECAUTIONS

- Ensure that the machine is connected to the right power supply. Plugging the machine to the wrong voltage, could cause the motor to overheat and catch fire.

- **DO NOT CONNECT 220V TO A 110V POWER SUPPLY.**
- **DO NOT CONNECT 110V TO A 220V POWER SUPPLY.**

- If you need to replace the fuse, please use a 15 amp fuse with the correct voltage. Failure to use the right fuse, could cause an electrical fault or motor to overheat. The fuse is located above the power cords female coupler.



- Do not move the fogger by pulling it by the power cord
- Unplug from power supply when not in use and before servicing or cleaning.
- Do not operate with a damaged cord or plug, after a malfunction, or if it's dropped or damaged. Return appliance to the nearest authorized service centre for repair.

- Do not modify the machine. Modifications or alterations not approved by the manufacturer will invalidate the guarantee.
- Do not inhale the cold fog or aerosol when applying. The Micro-droplets produced by this machine can float in the air a long time and are quickly absorbed by the lungs. Depending on the chemical being used, this could result in serious injury or death.
- Do not fog a flammable liquid. The brushes inside the motor could ignite it.
- You must wear protective equipment (face/breathing mask, protective clothing, gloves, etc.) when handling potentially hazardous chemicals.
- Keep away from children

02. PRODUCT OVERVIEW

This electric machine generates cold fog, mist or aerosol formed of tiny droplets. When the generator is switched on, the motor creates an air vacuum in the tank, pulling the solution through a tube towards a specially designed nozzle. Inside the nozzle the solution is split into tiny droplets. At the same time the motor creates air turbulence, propelling the droplets out of the nozzle. This cold fog is also known as ULV or Ultra Low Volume. This cold fog generator is used predominately for the application of disinfectants, insecticides, deodorisers, biocides and fungicides due to their optimum droplet size when tackling germs, insects, fungi and odours. It can fog both oil- and water-based solutions. 0-12pH.

03. FILLING THE TANK

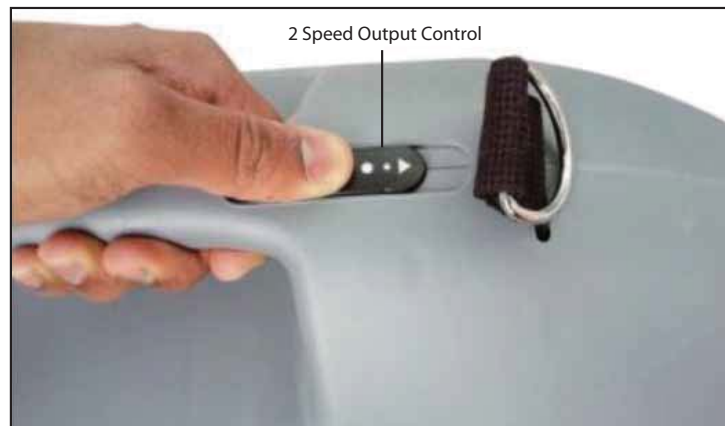
- Pre-mix the chemicals prior to filling the tank
- Mix the chemicals according to manufacturer's instructions
- Do not overfill the tank.
- Close the tank cap firmly making sure an air tight seal is achieved. Not closing it firmly could affect the machine's performance.



04. OPERATING THE UNIT

- Plug the power cord to the electric supply
- Turn on machine by sliding the switch to required setting:

o 1. Low Speed Fogging / 2. High Speed Fogging



- Turn off machine by sliding the switch to the OFF position
- Adjust the droplet size by turning the nozzle on the front of the machine. Clockwise reduces the droplet size. Anti-clockwise increases it.



05. CLEANING

Clean the fogger after every use. This will prolong the life of the machine.

- Cleanup of water based liquids.

STEP A: When fogging is complete, pour any liquid left in the tank to a suitable container, using a funnel. Operate the fogger for one minute with the nozzle opened to the largest droplet size setting (anti-clockwise). This will get rid of any existing liquid remaining in the fogger's internal tubes.

STEP B: Fill the fogger with some clean water and operate again for one minute. Remove any excess water from the tank.

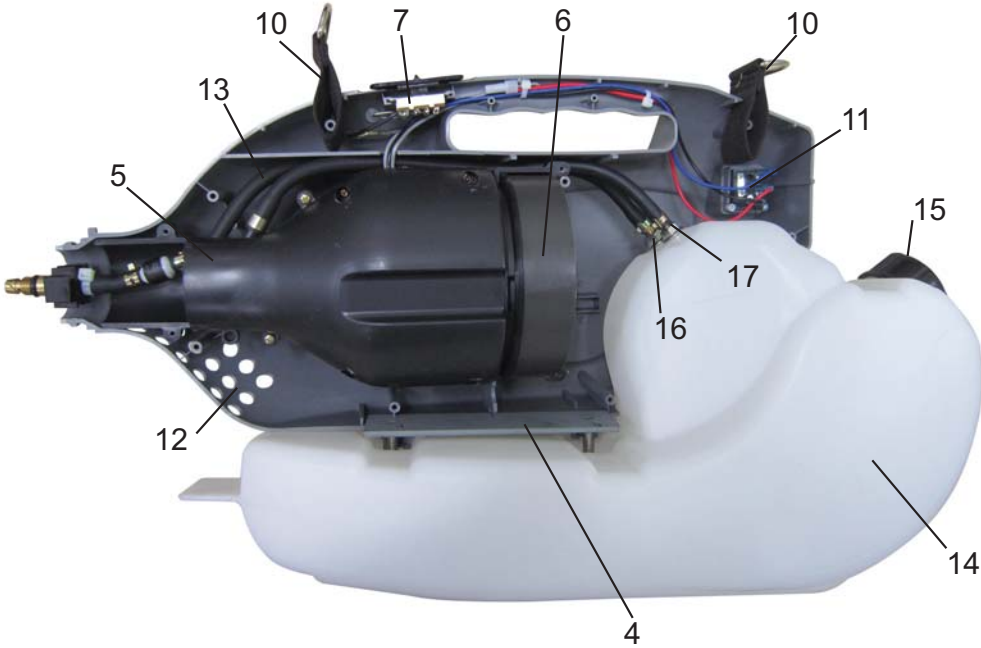
- Cleanup of emulsions.

After fogging, begin with "STEP A". Then fill with appropriate solvent for the chemical that was used and operate unit for 1 minute flushing any residual chemical left inside. Then repeat "STEP B". Allow to dry, before storing.



WARNING: Unplug fogger's power cord from the power source before attempting any cleaning or maintenance

06. MAIN PARTS



SPARE PARTS LIST



1. Air-cap



2. Cap-nozzle



3. Nozzle-Assy



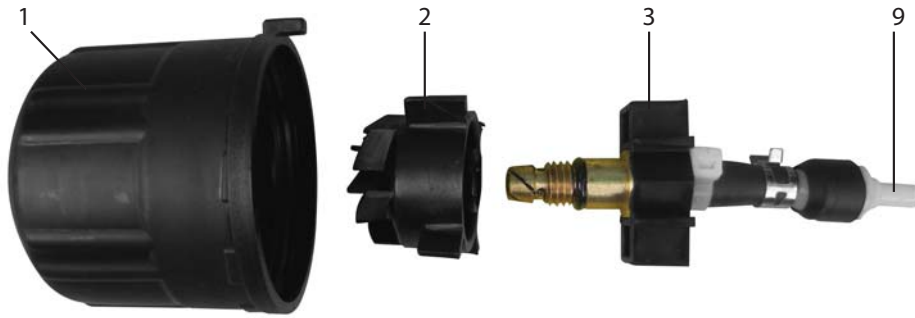
4. Plate



5. Motor



6. Motor-Assy



7. Switch-Assy



8. Assy-Solenoid Valve



9. Check Valve



10. Belt



11. Assy-Connector



12. Body-R,L



13. Hose



14. Tank-Assy



15. Cap-Tank



16. Air-Nipple



17. Water-Nipple



18. Case-Motor

07. SPECIFICATION

Configuration		C20	C100+	C150+
Specification	Dimensions	470x240x200mm	520x300x160 mm	620x310x170mm
	Tank capacity	1.5L	4L	6L
	Net Weight	3.0kg	3.5kg	4.5kg
	Nozzle Diameter	1.5/3.0 Ø	3.5 Ø	3.5 Ø
	Vent Size	10 Ø	13 Ø	18 Ø
	Injection	0.2L/M	0.2 ~ 1 L/M	0.2 ~ 1 L/M
	In	2~7 metres (Horizontal)	5 ~ 10 metres (Horizontal)	5 ~ 10 metres (Horizontal)
	Flow rate	15 ~ 30 LPH	50 ~60 LPH	50 ~60 LPH
	Droplet size	5~ 50 Microns	5~ 50 Microns	5~ 50 Microns
	Cable	10 metres	10 metres	10 metres
	Angle of Injection	80 Degrees	80 Degrees	80 Degrees
Motor	Voltage	220V/ 110V- 50~60HZ	220V/ 110V- 50HZ	220V/ 110V- 50HZ
	Motor wattage	560 Watts	1,150 Watts	1,150 Watts
	RPM	25,500~31.500 RPM	31,500 RPM	31,500 RPM
	Pressure		33Kpa	33Kpa
	Motor Life Cycle	500 h	800 h	800 h

PRODUCT GUARANTEE



This product is guaranteed for twelve months from the date of original purchase. Any defect that arises due to faulty materials or workmanship will either be replaced or repaired during this period by the seller or authorised distributor from whom you purchased the unit. Transportation charges or duties shall be borne by Purchaser.

The guarantee is subject to the following provisions:

- The guarantee does not cover normal wear, accidental damage, misuse, damage or used for a purpose for which is not designed; altered in any way; or subjected to any but the specified voltage if applicable.
- The product must be operated only by trained and skilled personnel and it must be correctly handled and operated in accordance with the instructions contained in this manual. The functional safety of the unit (e.g. by trial fogging with water) must be checked before putting the unit in operation. Any loose or leaking valves or lines should be repaired and fixed. If functional safety is not ensured, do not put the unit into operation.
- The guarantee will be rendered invalidated if the product is re-sold, fitted with non-original spare parts or damaged by inexpert repair.
- Chemical solutions must be officially approved for the intended application and the material safety data sheet of the chemical solution should be revised prior to operation. Oxygen and chlorine releasing chemicals (e.g. peroxides) and other acids should only be used with approved acid resistant equipment models. If not approved for acid resistance a Ph-value should be limited from 4,5-8,5. After use, fog with some clean water for about 3 minutes to remove any chemicals still left in the system. Ensure all the water is used up and the machine is dried prior to storage. Damage caused by corrosion due to humidity by wrongful storage will invalidate this guarantee.
- Any formation of aerosols or fogs from flammable substances or acids releasing oxygen and a mixture with air and/or dust always involves the risk of fire or explosion if there is a source of ignition. Observe the explosion limit of a pesticide and avoid over dosage accordingly. Only use non-inflammable liquids (without a flash point) for treatments in rooms where a dust explosion hazard exists. Unit is not explosion proof.
- Operators owe a duty of care to prevent unreasonable **risk** of harm or **injury**. Operators should not fog towards hot surfaces or electric cables nor fog in rooms with a temperature exceeding 35°C. Only treat closed rooms. Position the unit in a safe and upright position with the hand piece hooked or carry it with the strap over your shoulder. In case of stationary use, do not leave the unit unattended. Secure treated rooms against unauthorized access (i. e. provide warnings outside). Always keep treated rooms closed and eliminate leakages. Ventilate treated rooms sufficiently before re-using them. If the machine stops fogging unintentionally, close the gas valve immediately and turn the chemical supply valve off (dripping of chemical may occur)
- Specifications are subject to change without notice. The manufacturer disclaims any liability for the incidental or consequential damages. The guarantee is in addition to, and does not diminish your statutory or legal rights. In the event of a problem with the product within the guarantee period call the Customer Helpline on +44 (0) 1252 757 222

PRODUCT GUIDANCE

1. Please do not overfill the solution tank more than the following suggested amount:

C20: 1.5L (less than 3 jugs of 500ml)

C100+: 4.0L

C150+: 6.0L

2. This machine is not for fogging any powder based solutions; these can cause blockages and damage the machine. Only use solutions between the pH levels of 3 and 10.

3. Please do not lay down the machine on the left side, right side, or upside down. Always keep the machine upright. If not, the solution might flow into the motor area and cause a short circuit, which shortens the lifespan of the motor.



www.vectorfog.com

UK OFFICE | KOREA OFFICE | US OFFICE

TEL: (UK) +44 (0)1252 757 222 / (KOREA) +82 (0)70 4694 2489 / (US) +1 305 479 2301

Email: info@vectorfog.com